



Let **UK** Home

2 Bedrooms

Flat

**Located
in Birmingham**

£1,050 Per Month



padmin@letukhome.co.uk

<https://www.letukhome.co.uk/>

0121 828 8955



St Johns Walk Birmingham

B5 4TR



Let UK Home are excited to offer this stunning two bedroom apartment in Southside Apartments, perfectly located in Southside.

This property comprises a large bright open plan kitchen and living room, two double bedrooms with wardrobe (master with en-suite), a large family sized bathroom and ample storage.

The apartment benefits from concierge service, secure fob access to the building, lifts serving all floors, and allocated parking spaces – all designed to create a safe, comfortable and pleasant living environment for residents.

Surrounded by abundant high-quality educational institutions, this property enjoys a strong academic atmosphere. University College Birmingham, Aston University and Birmingham City University are all within easy walking distance, while the University of Birmingham is accessible via a short bus ride.

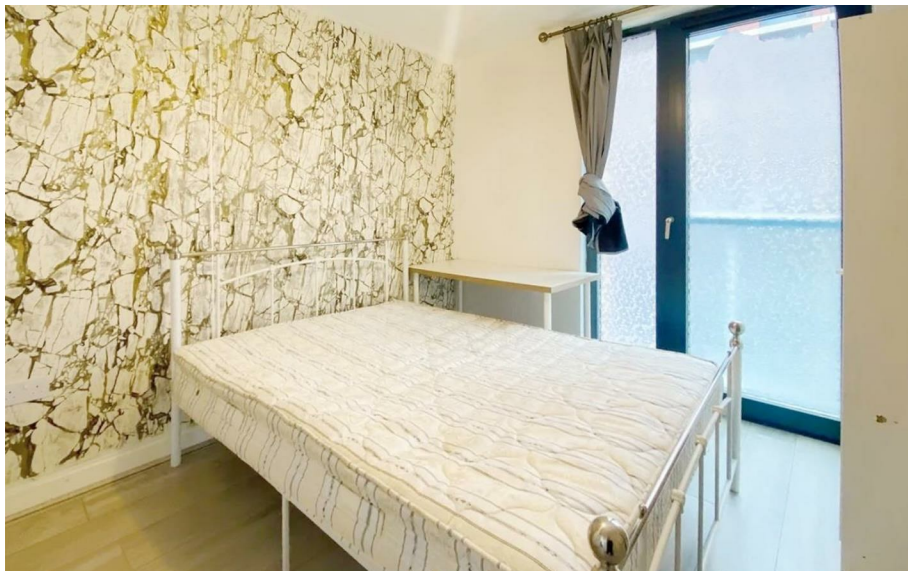
Situated in a prime city centre location, the property enjoys extremely convenient transportation links. It is just a short walk away from New Street Station and Moor Street Station, close to metro tram stops and numerous bus routes running nearby. Residents can easily travel across all main urban areas and connect to major cities nationwide, making daily commutes and long-distance trips highly efficient.

Located right in the heart of Birmingham's Chinese Quarter, the area features a vibrant daily living atmosphere with plenty of Chinese supermarkets, authentic Chinese restaurants and diverse international cuisines. It is close to large

St Johns Walk Birmingham

£1,050 Per Month

- Fully Furnished
- Close to Transport Links
- Concierge Service
- EPC Rating: C
- Close to Local Shops
- Close to Universities
- Allocated parking





Let **UK** Home

Let UK Home
JQ Modern 120 Vyse St
Birmingham
B18 6NF

0121 828 8955

pmadmin@letukhome.co.uk

Council Tax Band: D

Local Authority:

Agents Note: Whilst every care has been taken to prepare these particulars, they are for guidance purposes only. All measurements are approximate and are for general guidance purposes only and whilst every care has been taken to ensure their accuracy, they should not be relied upon and potential buyers/tenants are advised to recheck the measurements.

Energy Efficiency Rating		Current	Potential
Very energy efficient - lower running costs			
(92 plus) A			
(81-91) B			
(69-80) C			
(55-68) D			
(39-54) E			
(21-38) F			
(1-20) G			
Not energy efficient - higher running costs			
England & Wales	EU Directive 2002/91/EC		

<https://www.letukhome.co.uk/>